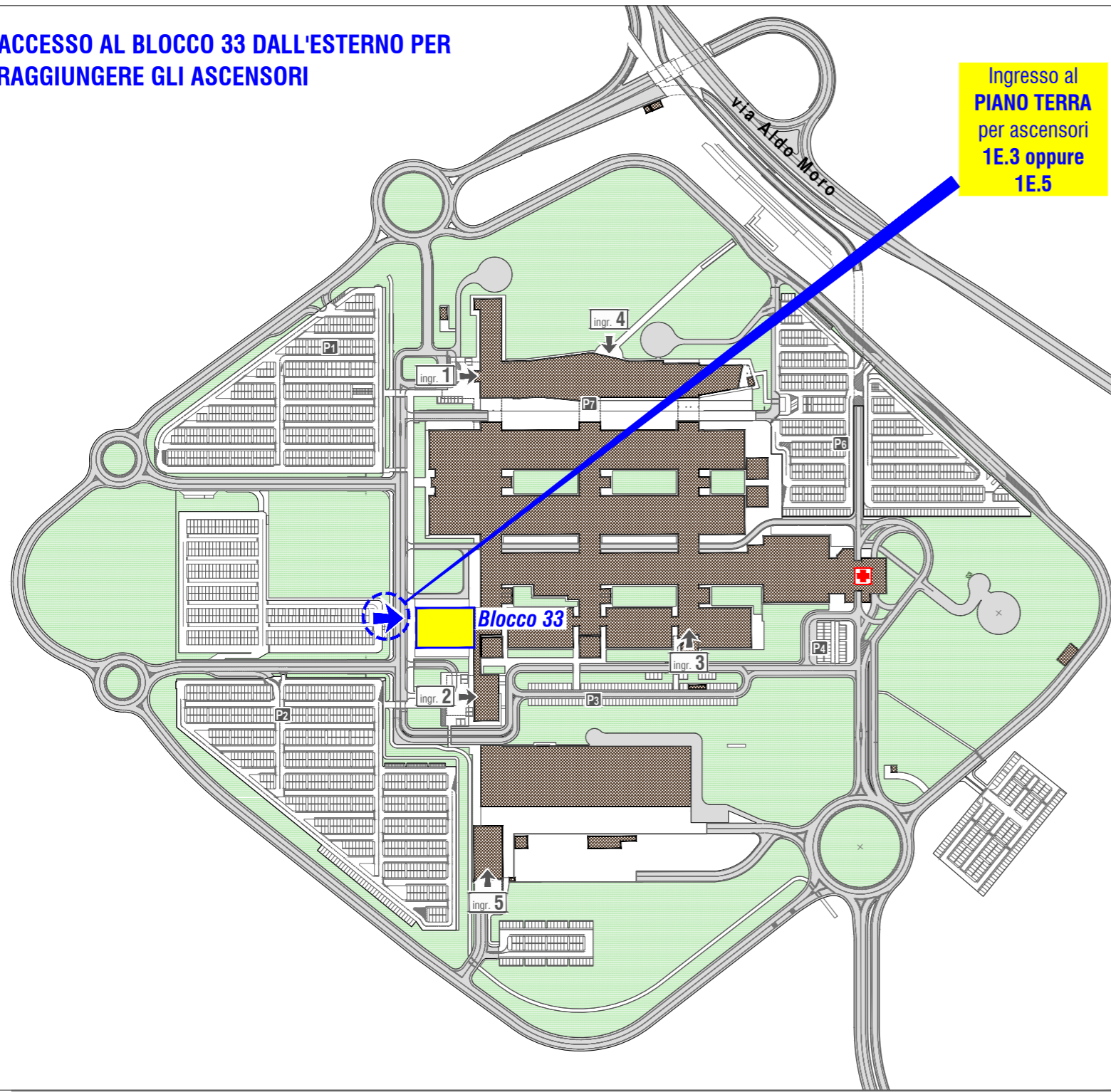
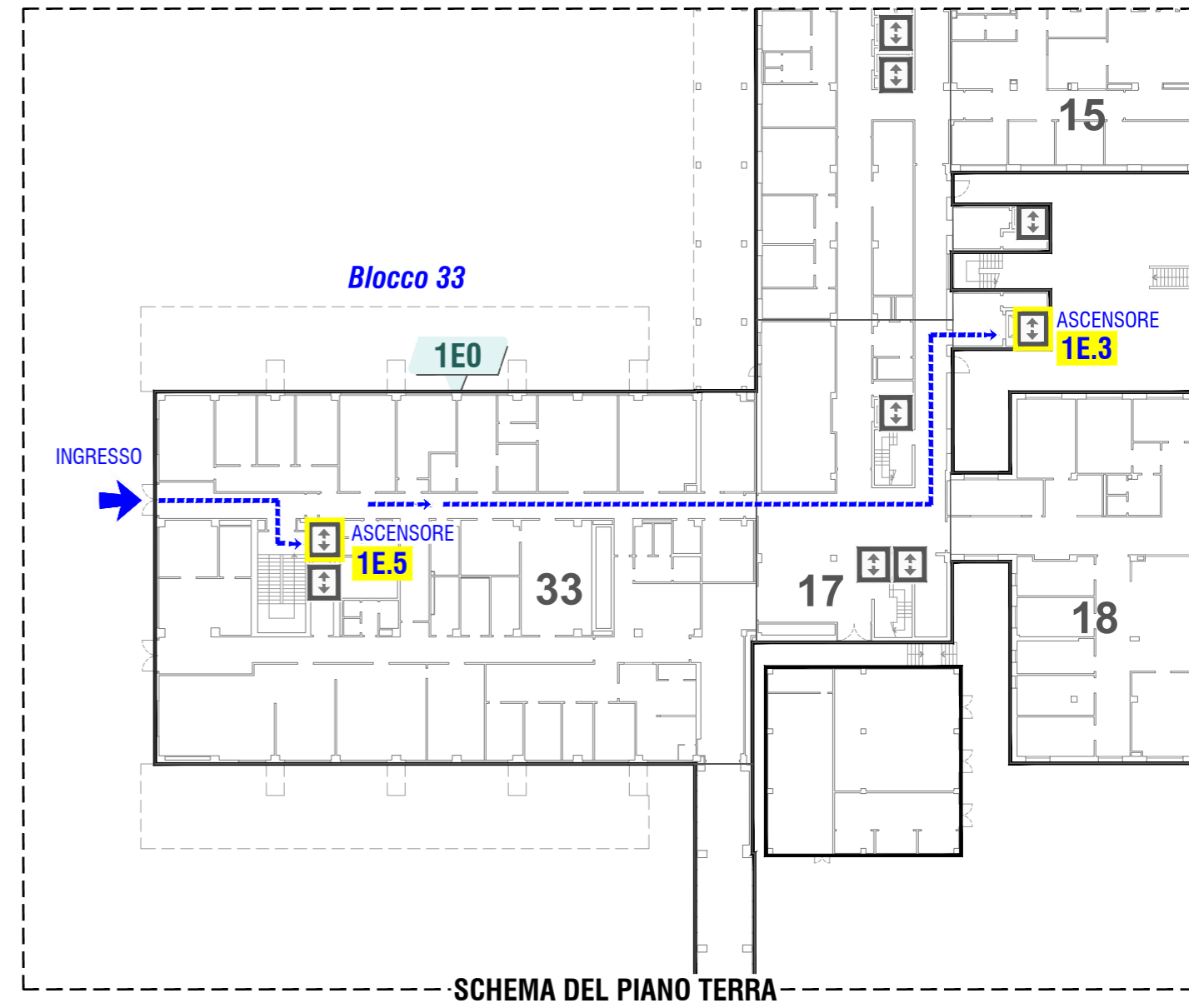


ACCESSO AL BLOCCO 33 DALL'ESTERNO PER
RAGGIUNGERE GLI ASCENSORI

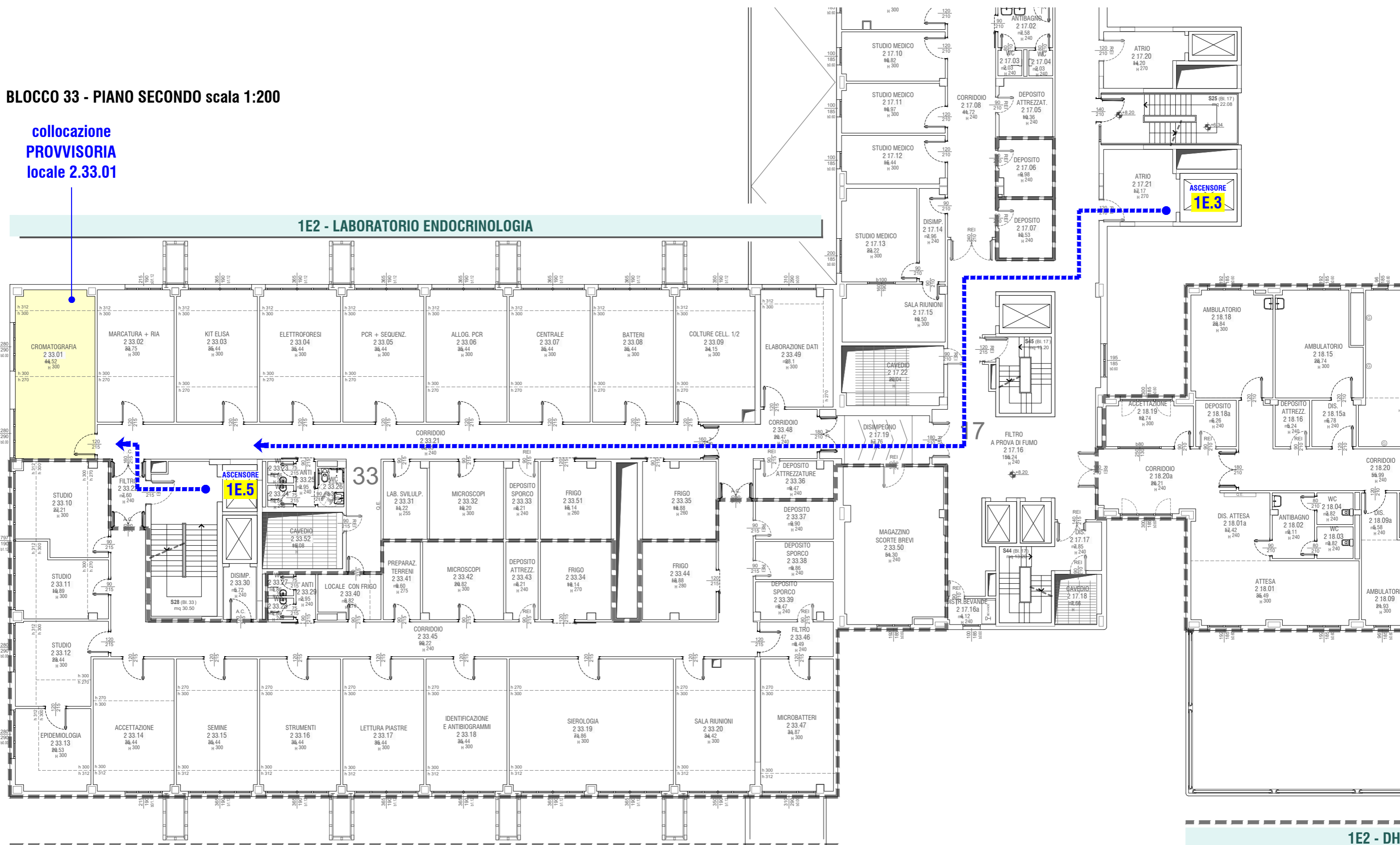


PLANIMETRIA GENERALE AREA



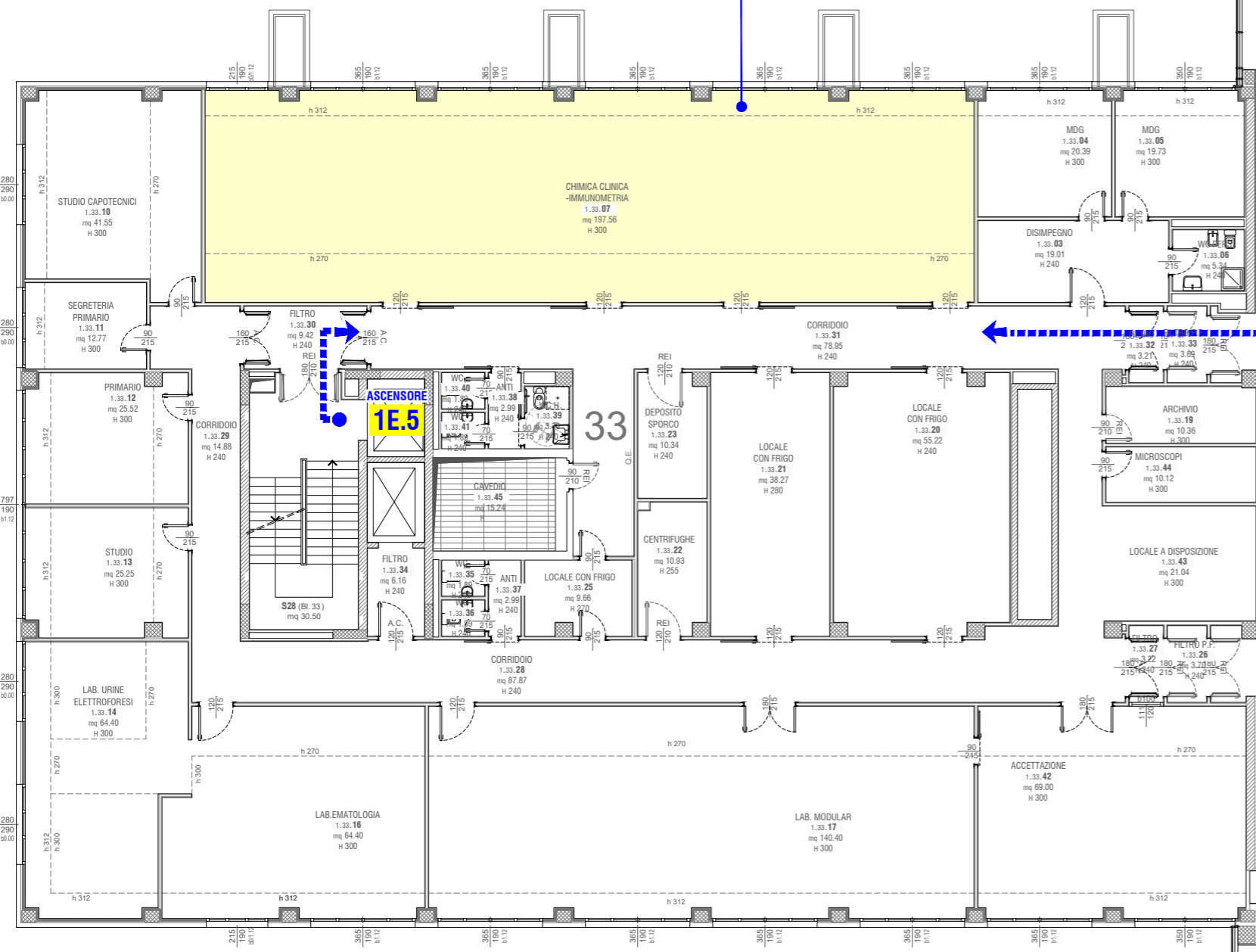
BLOCCO 33 - PIANO SECONDO scala 1:200

collocazione
PROVVISORIA
 locale 2.33.01



BLOCCO 33 - PIANO PRIMO scala 1:200

**collocazione
DEFINITIVA
locale 1.33.07**



1E1 - LABORATORIO ANALISI

