


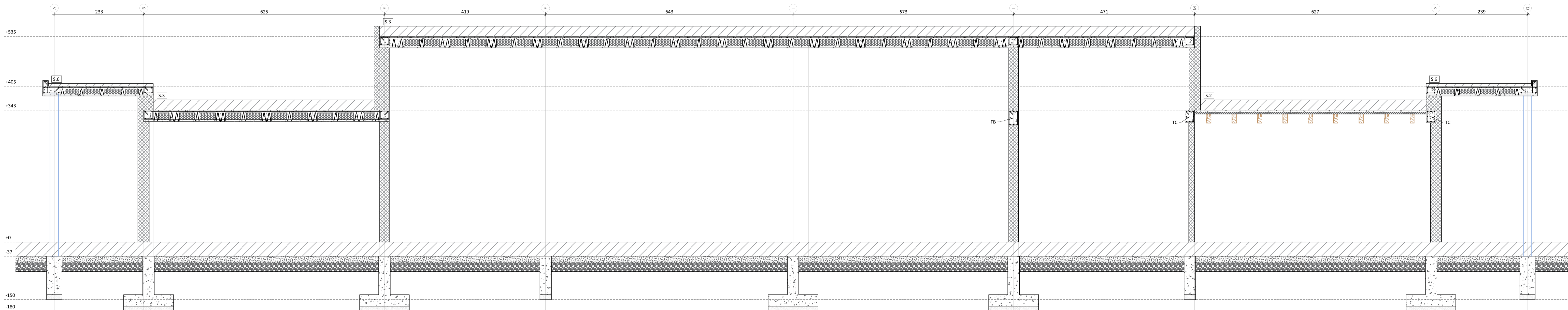


SCALA 1:50

 ELEMENTI IN C.A.
  PACCHETTI NON STRUTTURALI
  VISTA ELEMENTI IN ACC.

 TAMPONATURE
 VISTA ELEMENTI IN C.A.





SCALA 1:50

This architectural elevation drawing shows a building facade with a staircase and structural details. The drawing includes a grid of horizontal and vertical lines, with elevations marked on the left and horizontal dimensions marked at the top. The facade features a staircase with a metal railing system, including handrails and balustrades. The railing system is labeled with 'S.8', 'S.9', 'S.5', 'S.4', 'S.7', and 'S.6'. The drawing also shows the structural elements of the building, including the foundation, walls, and roof. The elevation is marked with the following values: +695, +630, +555, +405, +343, +0, -37, -150, and -180. The horizontal dimensions are marked at the top: 233, 625, 419, 643, 573, 471, 627, and 239. The drawing includes the following text: 'PIL. HEA 160 H=224cm', 'Cordoli in c.a. 25x20cm per l'appoggio della struttura metallica', 'TC', and 'S.8', 'S.9', 'S.5', 'S.4', 'S.7', 'S.6'.

SCALA 1:50

This architectural section drawing illustrates a building's structural profile. The drawing includes the following details:

- Vertical Levels:** Elevation markers on the left indicate levels at +535, +405, +343, +0, -37, -150, and -180.
- Horizontal Dimensions:** Top dimensions specify lengths of 568, 483, 243, 385, and 237 units.
- Structural Elements:**
 - Roof:** Shown with a hatched pattern, featuring a section line S.7.
 - Walls:** Represented with a cross-hatch pattern. A section line S.6 is located on the right wall.
 - Floors:** Indicated by horizontal lines with hatching. A section line S.1 is shown on a lower floor level.
 - Foundations:** Shown at the bottom with a stippled pattern.
 - Columns:** Vertical structural elements supporting the roof and floor slabs.
- Annotations:**
 - Labels "TB" are placed near wall and column intersections.
 - A red vertical line is drawn through the section, passing through a small circle at the top.
 - Blue vertical lines are drawn on the right side of the section.

Revisione	Data	Oggetto modifiche	Eseguito	Verificato	Approvato
<div>REALIZZAZIONE DEL POLO INFANZIA Via Villagrappa - San Mauro Pascoli (FC)</div>					
<div><div>Finanziato dall'Unione europea NextGenerationEU</div></div>		<div>“Opera finanziata dall’Unione Europea – NextGenerationEU - Fondi PNRR – M4C1 – 1.1 “PIANI PER ASILI NIDO E SCUOLE DELL’INFANZIA E SERVIZI DI EDUCAZIONE E CURA PER LA PRIMA INFANZIA”</div>			
<div></div>		<div>Comune di San Mauro Pascoli. Provincia Forlì - Cesena</div>			
<div>Progetto DEFINITIVO di cui all’art.24 del D.P.R. 207/2010 per la realizzazione di Nuovo Polo Infanzia in Via Villagrappa CUP. G85E21000090006</div>					
<div>committente: Comune di San Mauro Pascoli Piazza Giuseppe Mazzini n.3 47030 San Mauro Pascoli (FC)</div> <div>responsabile del procedimento geom. Giovanni Ravagli Responsabile Settore Tecnico Ufficio Edilizia Privata ed Urbanistica</div>		<div>progetto: TULLIO ZINI ARCHITETTO via Archelia, 165 - 41124 Modena tel.059-381050 tulliozini@tulliozini.it</div> <div>ZZP PARTNERS via Archelia, 165 - 41124 Modena tel.059-381050 mail:zzppartners.it www.zzppartners.it</div> <div>INTEGRATO Professionisti Associati Via Alberto Brazil, 91 - 41122 Modena (MO) tel.059-438770 info@webinagra.it</div> <div>Studio Associato Energia Via Guglielmo Manzoni, 30/3 - 48018 Faenza (RA) tel. 0546-686163 energia@energia.ra.it</div>		<div>progetto: architettotecnico computi strutture Impianti meccanici, elettrici, energetici, antinebbia sicurezza acustica DNSH indagine geologica</div> <div>arch. Tullio Zini arch. Michele Zini arch. Claudia Zbolari arch. Sara Michielini geom. Maurizio Forghieri arch. Oliver Forghieri ing. Filippo Naldi Daniele Cavazzani p.i. Andrea Montuschi ing. Pietro Collina p.i. Piero Ponti ing. Filippo Naldi ing. Emanuele Morfini ing. Francesco Bonacini Geoc Group srl</div>	
<div>titolo Sezioni strutturali A-A, B-B e C-C</div>			<div>scala 1:50</div>	<div>tavola 07s</div>	<div>data data della firma digitale</div>