



Redattore **GILTECNOLOGY S.R.L.**
Telefono **0039 0372 1920899**
Fax
e-Mail **info@gmtecnoleoed.com - genesi@giltecnology.it**

Indice

Project 1	
Indice	1
Lista pezzi lampade	2
PKC-150-100W	
Scheda tecnica apparecchio	3
Exterior Scene 2	
Dati di pianificazione	4
Lista pezzi lampade	5
Lampade (planimetria)	6
Lampade (lista coordinate)	7
Rendering 3D	8
Rendering colori sfalsati	9
Superfici esterne	
Ground Element 1	
Surface 1	
Isolinee (E)	10
Livelli di grigio (E)	11
Grafica dei valori (E)	12

PROGETTO ILLUMINOTECNICO
Scuola Media Biagio Pelacani
NOCETO PR
illuminazione perimetrale esterna
installata in parete

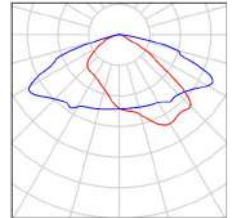


Redattore **GILTECNOLOGY S.R.L.**
Telefono **0039 0372 1920899**
Fax
e-Mail **info@gmtecnoled.com - genesi@giltecnology.it**

Project 1 / Lista pezzi lampade

16 Pezzo PKC-150-100W
Articolo No.: PKC-150-100W
Flusso luminoso (Lampada): 16651 lm
Flusso luminoso (Lampadine): 16651 lm
Potenza lampade: 94.6 W
Classificazione lampade secondo CIE: 99
CIE Flux Code: 39 78 97 99 100
Dotazione: 1 x Definito dall'utente (Fattore di correzione 1.000).

L'immagine della lampada segue nella scheda successiva





ALPHARD PKC

CE RoHS compliant LM79 LM80 TM21



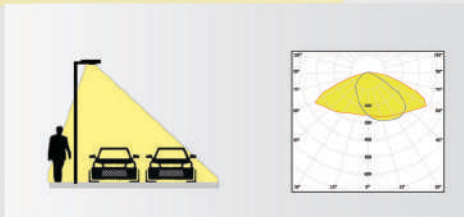
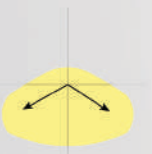
Features

Wattage Switchable	75W/100W/150W Switchable	152W/200W/240W Switchable	200W/240W/300W Switchable
Luminous Efficacy	180LPW@75W 175LPW@100W 160LPW@150W	180LPW@152W 175LPW@200W 165LPW@240W	180LPW@200W 175LPW@240W 160LPW@300W
Lumens output	13500lm@75W 17500lm@100W 24000lm@150W	28000lm@152W 35000lm@200W 40000lm@240W	36000lm@200W 42000lm@240W 48000lm@300W
MF Equivalent	300W-600W	800W-1000W	1000W-1500W
Fixture Weight	3.6kg(8.0lb)	4.4kg(9.7lb)	kg(lb)
LEDs QTY	196	336	392
LEDs Brand	Lumileds SMD3030		
CCT	4000K, 5000K		
CRI	70+		
Beam Angle	TYPE3, TYPE4, TYPE 5		
Input Voltage	100-277Vac, 120-347Vac, 277-480Vac		
Surge Protection	6KA / 10KA		
Function	Photocell, Daylight Harvest, 1-10V Dimming, Motion Sensor Optional		
Power Factor	>0.95		
IP Rating	IP66 /Wet Location		
Working Temp.	-40° C ~ 50° C (-40° F~122° F)		
Storage Temp.	-40° C ~ 70° C (-40° F~158° F)		
Finish	Dark Bronze		
Lifespan(>70)	>100,000 Hours		
Warranty	5 Years warranty		
Certification	ETL, cETL, DLC Premium		



Optical options:

• TYPE 3



160lm/w

5 YEARS WARRANTY

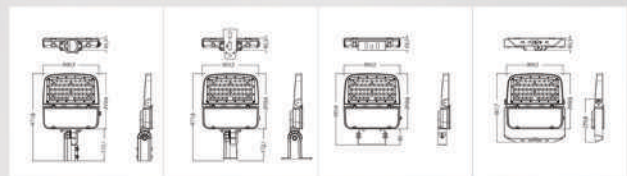
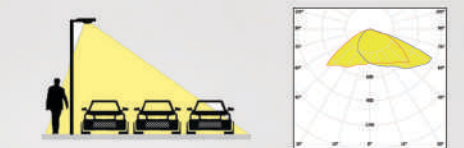
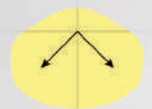
Meanwell Driver

Lumileds LED

Dimension

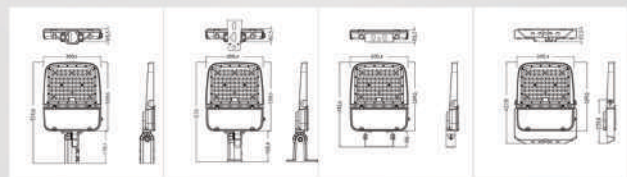
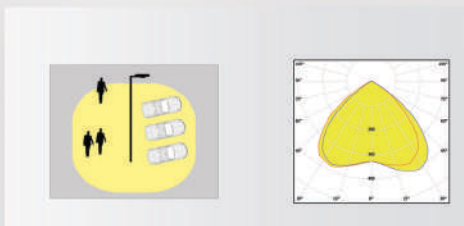
• 75W-100W-150W

• TYPE 4



• 152W-200W-240W

• TYPE 5

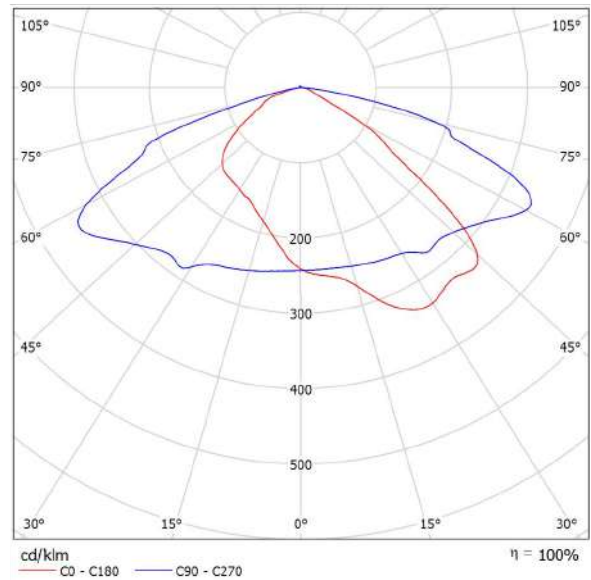


Redattore **GILTECNOLOGY S.R.L.**
Telefono **0039 0372 1920899**
Fax
e-Mail **info@gmtecnolead.com - genesi@giltecnology.it**

PKC-150-100W / Scheda tecnica apparecchio

Emissione luminosa 1:

Per un'immagine della lampada consultare il nostro catalogo lampade.

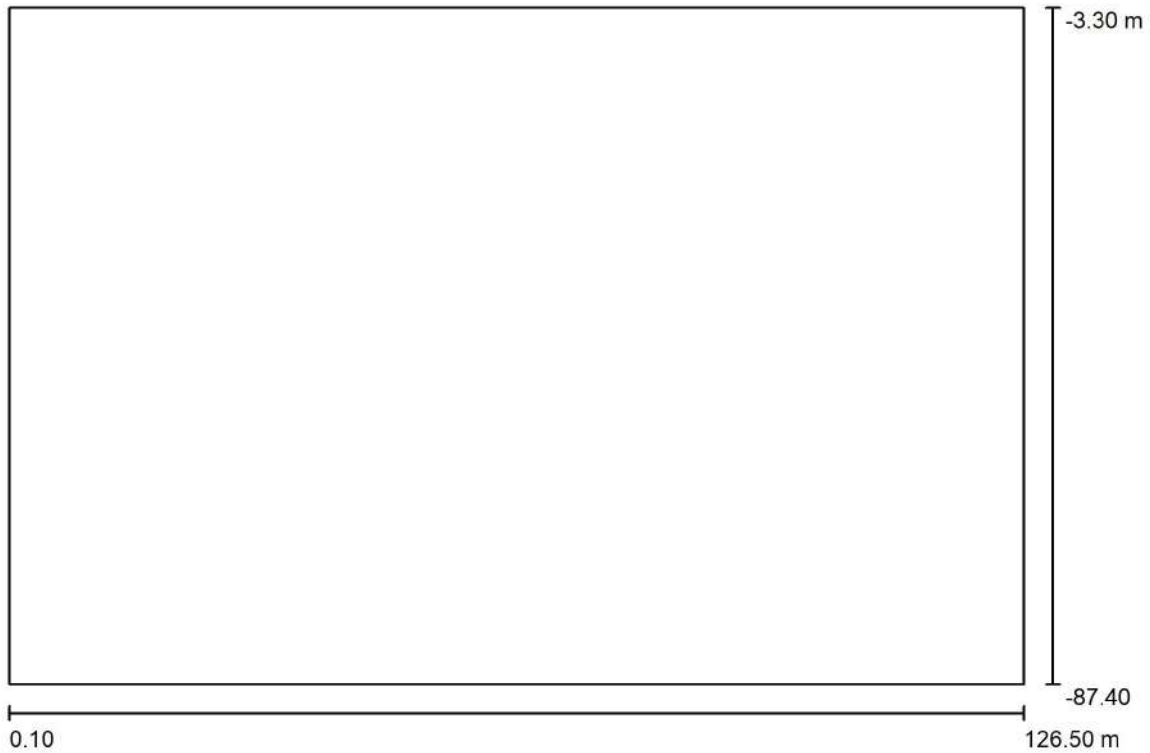


Classificazione lampade secondo CIE: 99
CIE Flux Code: 39 78 97 99 100

A causa dell'assenza di simmetria, per questa lampada non è possibile rappresentare la tabella UGR.

Redattore **GILTECNOLOGY S.R.L.**
 Telefono **0039 0372 1920899**
 Fax
 e-Mail **info@gmtecnoleed.com - genesi@giltecnology.it**

Exterior Scene 2 / Dati di pianificazione



Fattore di manutenzione: 0.80, ULR (Upward Light Ratio): 0.5%

Scala 1:904

Distinta lampade

No.	Pezzo	Denominazione (Fattore di correzione)	Φ (Lampada) [lm]	Φ (Lampadine) [lm]	P [W]
1	16	PKC-150-100W (1.000)	16651	16651	94.6
			Totale: 266408	Totale: 266416	1513.6

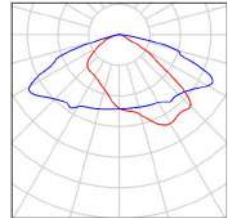


Redattore **GILTECNOLOGY S.R.L.**
Telefono **0039 0372 1920899**
Fax
e-Mail **info@gmtecnolead.com - genesi@giltecnology.it**

Exterior Scene 2 / Lista pezzi lampade

16 Pezzo PKC-150-100W
Articolo No.: PKC-150-100W
Flusso luminoso (Lampada): 16651 lm
Flusso luminoso (Lampadine): 16651 lm
Potenza lampade: 94.6 W
Classificazione lampade secondo CIE: 99
CIE Flux Code: 39 78 97 99 100
Dotazione: 1 x Definito dall'utente (Fattore di correzione 1.000).

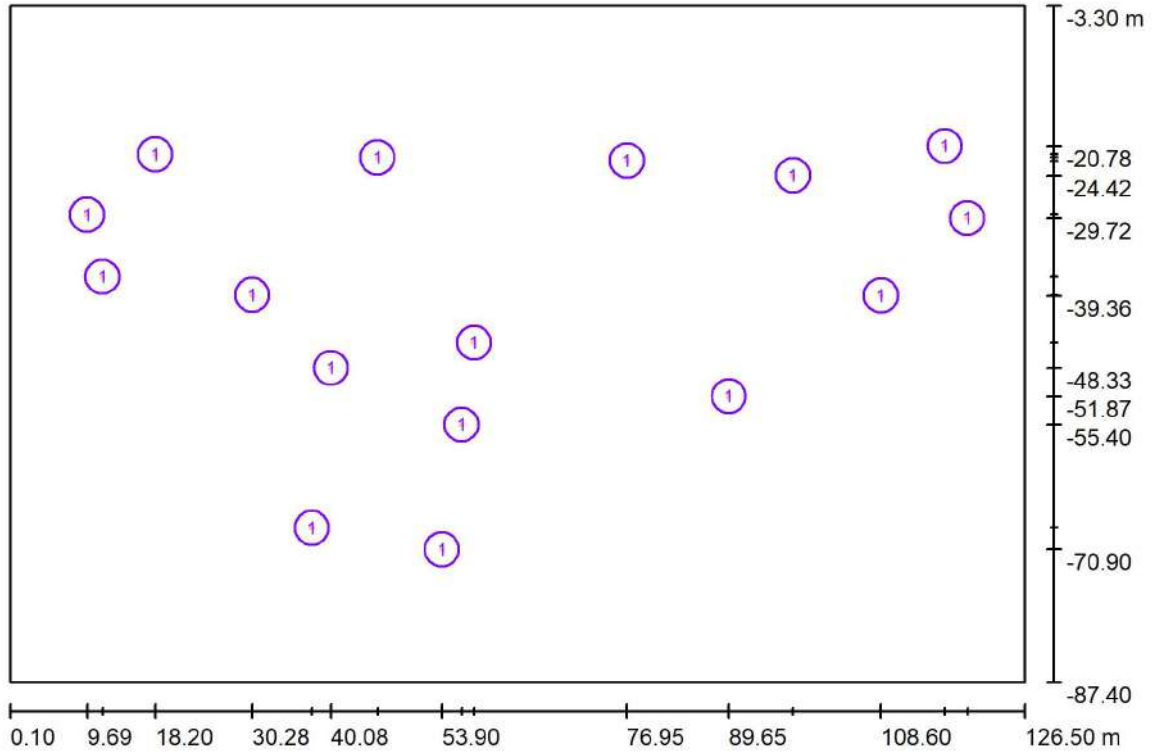
Per un'immagine della lampada consultare il nostro catalogo lampade.





Redattore **GILTECNOLOGY S.R.L.**
Telefono **0039 0372 1920899**
Fax
e-Mail **info@gmtecnolead.com - genesi@giltecnology.it**

Exterior Scene 2 / Lampade (planimetria)



Scala 1 : 904

Distinta lampade

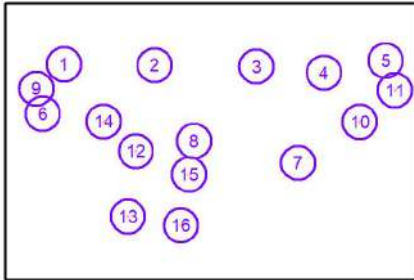
No.	Pezzo	Denominazione
1	16	PKC-150-100W

Redattore **GILTECNOLOGY S.R.L.**
 Telefono **0039 0372 1920899**
 Fax
 e-Mail **info@gmtecnoled.com - genesi@giltecnology.it**

Exterior Scene 2 / Lampade (lista coordinate)

PKC-150-100W

16651 lm, 94.6 W, 1 x 1 x Definito dall'utente (Fattore di correzione 1.000).

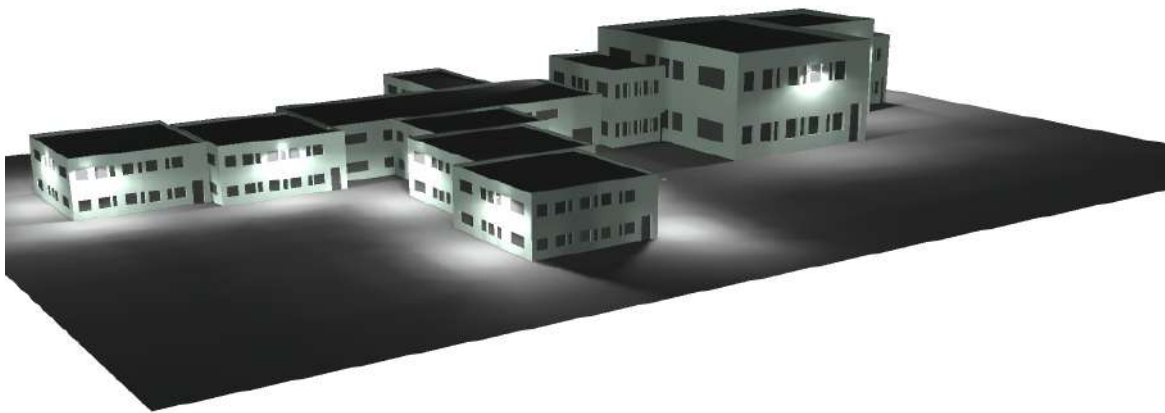


No.	Posizione [m]			Rotazione [°]		
	X	Y	Z	X	Y	Z
1	18.200	-21.800	5.000	0.0	0.0	90.0
2	45.865	-22.181	5.000	0.0	0.0	90.0
3	76.950	-22.578	9.000	0.0	0.0	90.0
4	97.615	-24.424	10.000	0.0	0.0	90.0
5	116.517	-20.780	9.000	0.0	0.0	90.0
6	11.600	-37.000	5.000	0.0	0.0	-90.0
7	89.650	-51.871	9.000	0.0	0.0	-90.0
8	57.900	-45.200	5.000	0.0	0.0	0.0
9	9.688	-29.300	5.000	0.0	0.0	180.0
10	108.600	-39.359	9.000	0.0	0.0	-90.0
11	119.348	-29.717	9.000	0.0	0.0	0.0
12	40.078	-48.328	5.000	0.0	0.0	180.0
13	37.690	-68.200	5.000	0.0	0.0	180.0
14	30.275	-39.274	5.000	0.0	0.0	-90.0
15	56.360	-55.400	5.000	0.0	0.0	0.0
16	53.900	-70.900	5.000	0.0	0.0	0.0



Redattore **GILTECNOLOGY S.R.L.**
Telefono **0039 0372 1920899**
Fax
e-Mail **info@gmtecnolead.com - genesi@giltecnology.it**

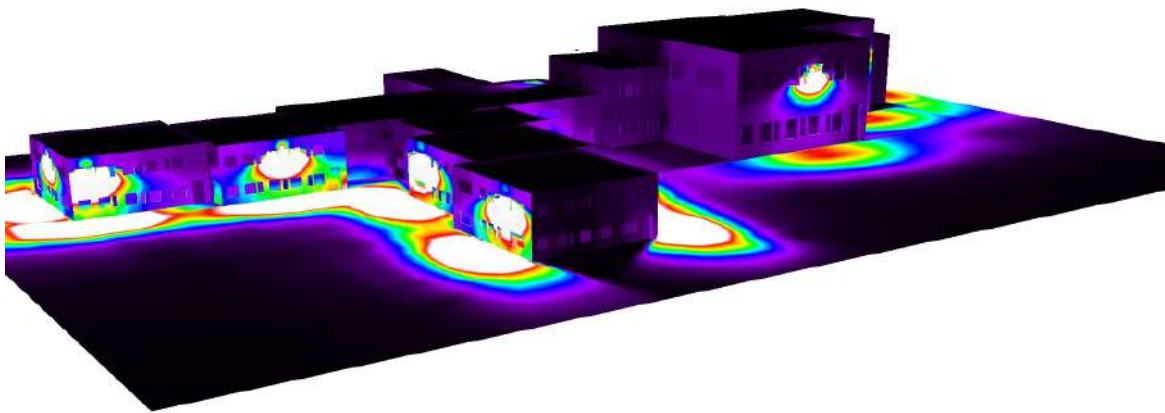
Exterior Scene 2 / Rendering 3D





Redattore **GILTECNOLOGY S.R.L.**
Telefono **0039 0372 1920899**
Fax
e-Mail **info@gmtecnolead.com - genesi@giltecnology.it**

Exterior Scene 2 / Rendering colori sfalsati

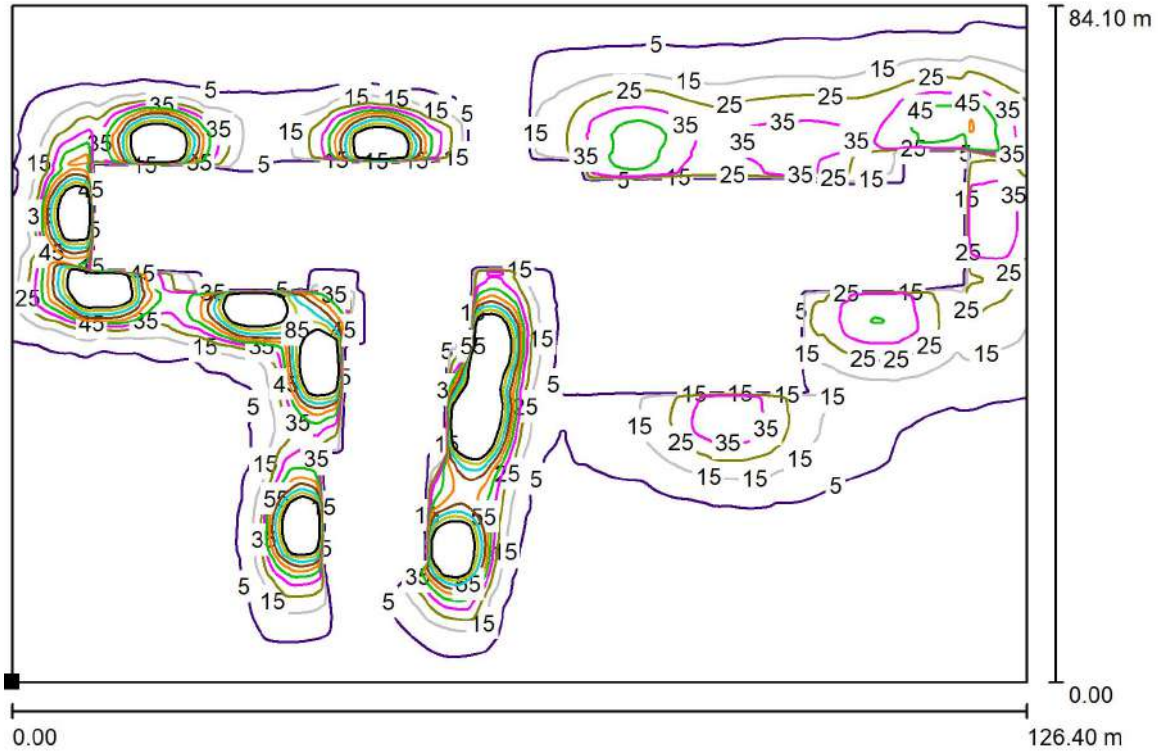


0 6.25 12.50 18.75 25 31.25 37.50 43.75 50

lx

Redattore **GILTECNOLOGY S.R.L.**
 Telefono **0039 0372 1920899**
 Fax
 e-Mail **info@gmtecnoleoed.com - genesi@giltecnology.it**

Exterior Scene 2 / Ground Element 1 / Surface 1 / Isolinee (E)



Valori in Lux, Scala 1 : 904

Posizione della superficie nella
 scena esterna:
 Punto contrassegnato:
 (0.100 m, -87.400 m, 0.000 m)



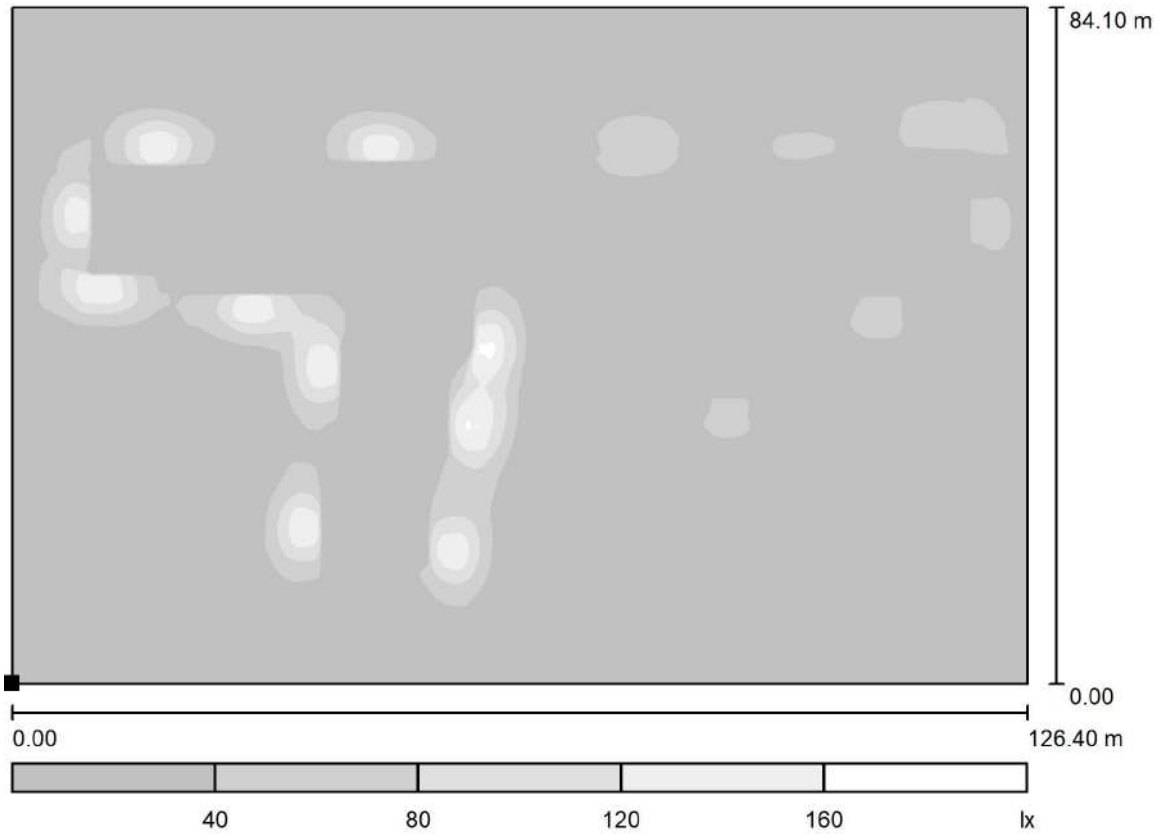
Reticolo: 512 x 512 Punti

E_m [lx]	E_{min} [lx]	E_{max} [lx]	E_{min} / E_m	E_{min} / E_{max}
14	0.04	167	0.003	0.000



Redattore **GILTECNOLOGY S.R.L.**
 Telefono **0039 0372 1920899**
 Fax
 e-Mail **info@gmtecnolead.com - genesi@giltecnology.it**

Exterior Scene 2 / Ground Element 1 / Surface 1 / Livelli di grigio (E)



Scala 1 : 904

Posizione della superficie nella
 scena esterna:
 Punto contrassegnato:
 (0.100 m, -87.400 m, 0.000 m)



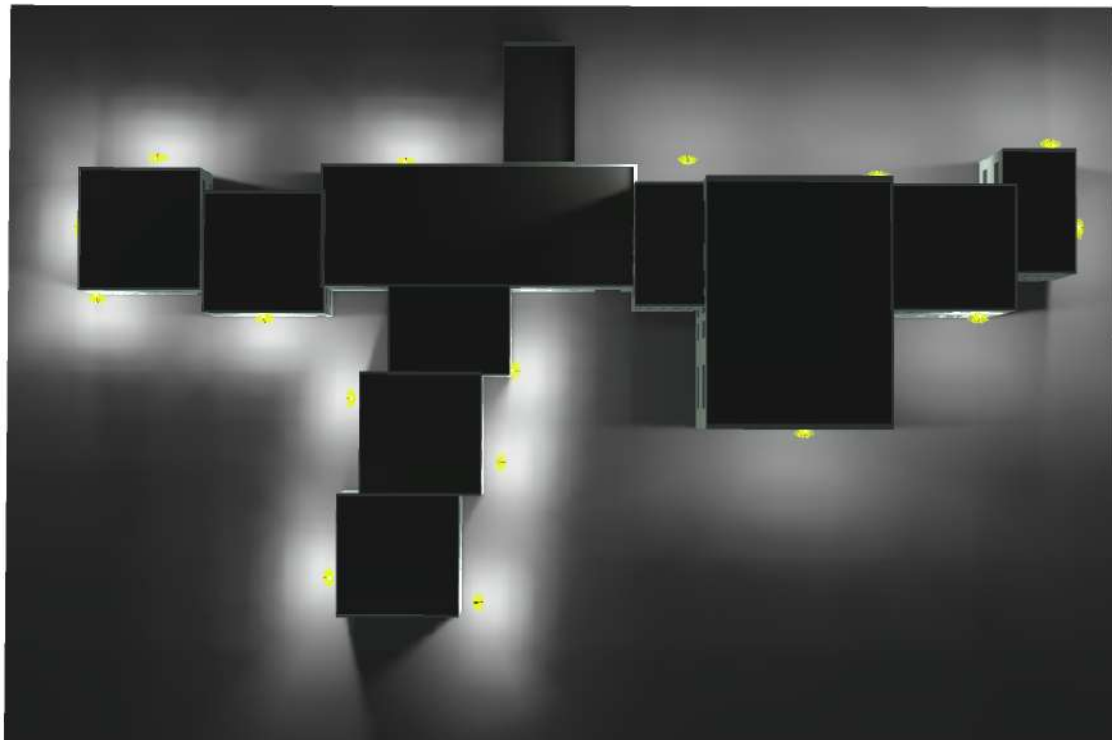
Reticolo: 512 x 512 Punti

E_m [lx]	E_{min} [lx]	E_{max} [lx]	E_{min} / E_m	E_{min} / E_{max}
14	0.04	167	0.003	0.000



Operator **GILTECNOLOGY S.R.L.**
Telephone **0039 0372 1920899**
Fax
e-Mail **info@gmtecnoled.com - genesi@giltecnology.it**

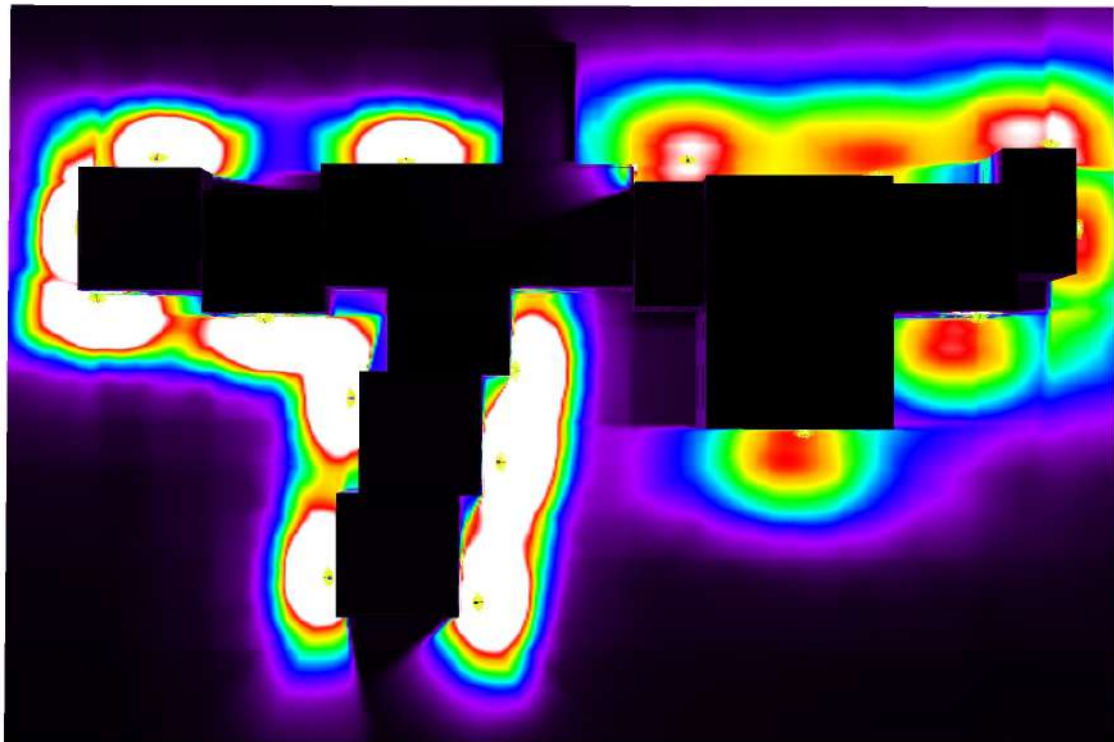
Exterior Scene 2 / 3D Rendering





Operator **GILTECNOLOGY S.R.L.**
Telephone **0039 0372 1920899**
Fax
e-Mail **info@gmtecnoled.com - genesi@giltecnology.it**

Exterior Scene 2 / False Color Rendering

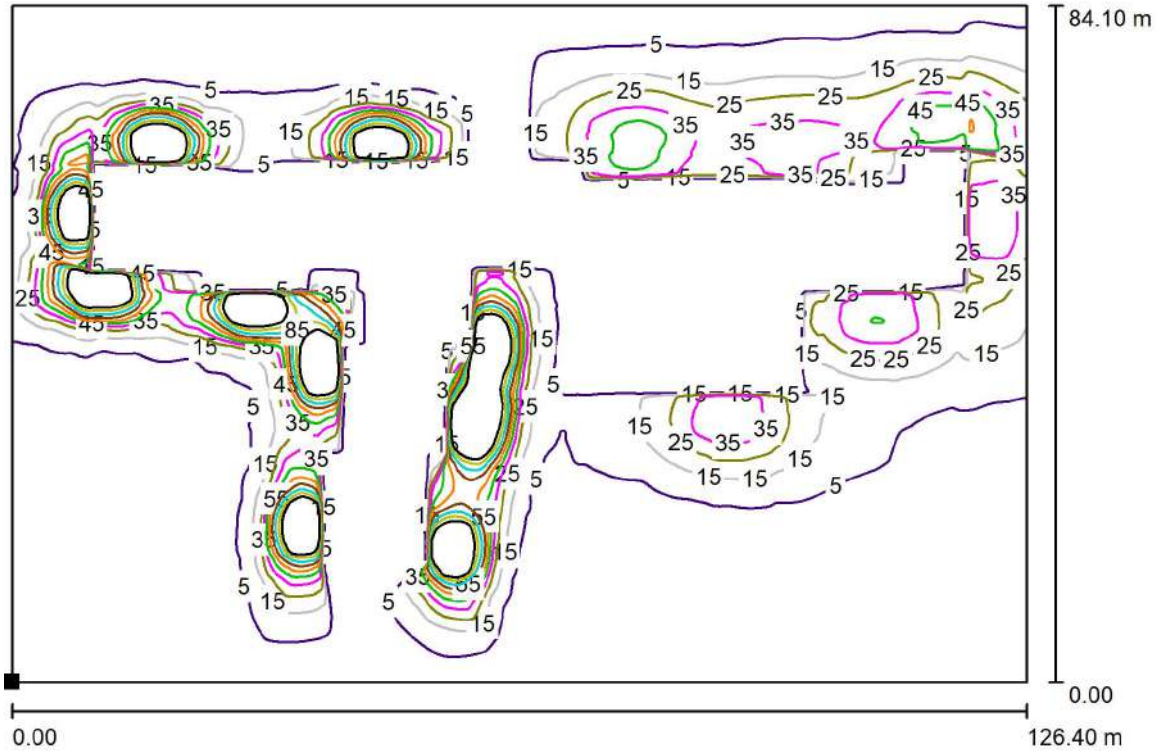


0 6.25 12.50 18.75 25 31.25 37.50 43.75 50

lx

Operator **GILTECNOLOGY S.R.L.**
 Telephone **0039 0372 1920899**
 Fax
 e-Mail **info@gmtecnolead.com - genesi@giltecnology.it**

Exterior Scene 2 / Ground Element 1 / Surface 1 / Isolines (E)



Values in Lux, Scale 1 : 904

Position of surface in external scene:
 Marked point:
 (0.100 m, -87.400 m, 0.000 m)



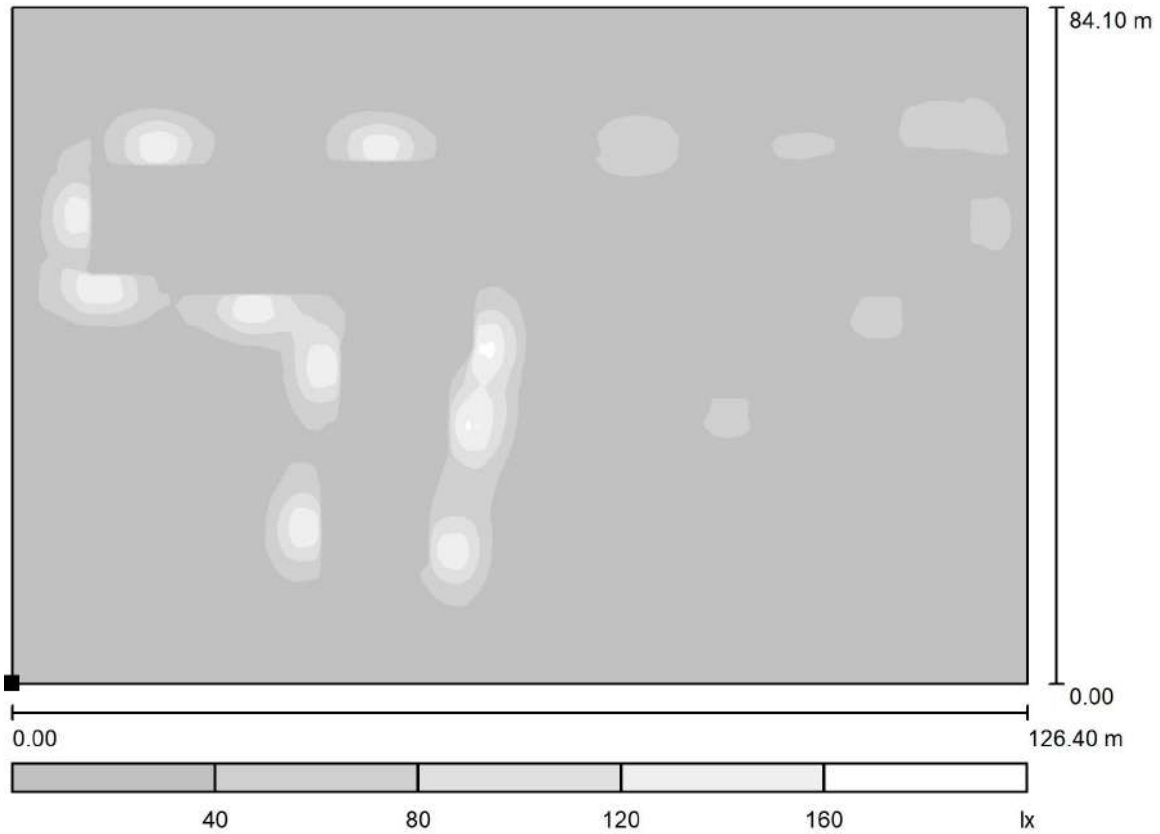
Grid: 512 x 512 Points

E_{av} [lx]	E_{min} [lx]	E_{max} [lx]	$u0$	E_{min} / E_{max}
14	0.04	167	0.003	0.000



Operator **GILTECNOLOGY S.R.L.**
Telephone **0039 0372 1920899**
Fax
e-Mail **info@gmtecnoloed.com - genesi@giltecnology.it**

Exterior Scene 2 / Ground Element 1 / Surface 1 / Greyscale (E)



Scale 1 : 904

Position of surface in external scene:
Marked point:
(0.100 m, -87.400 m, 0.000 m)



Grid: 512 x 512 Points

E_{av} [lx]
14

E_{min} [lx]
0.04

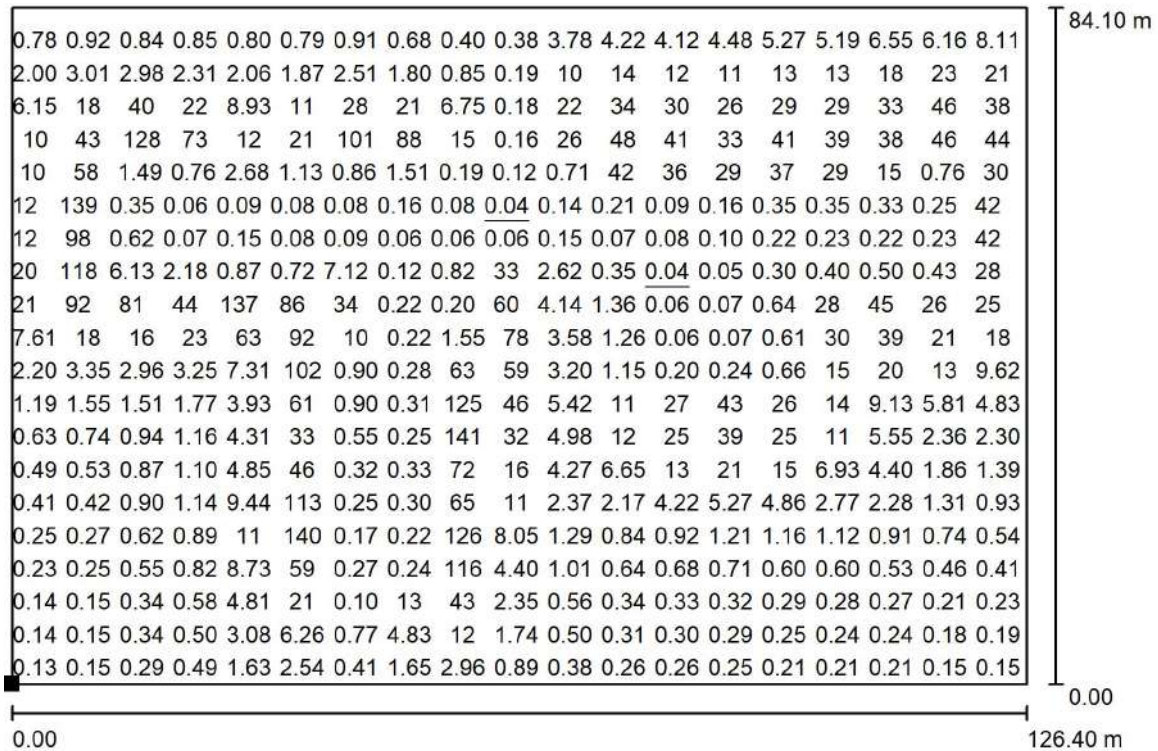
E_{max} [lx]
167

u_0
0.003

E_{min} / E_{max}
0.000

Redattore **GILTECNOLOGY S.R.L.**
 Telefono **0039 0372 1920899**
 Fax
 e-Mail **info@gmtecnoleoed.com - genesi@giltecnology.it**

Exterior Scene 2 / Ground Element 1 / Surface 1 / Grafica dei valori (E)



Valori in Lux, Scala 1 : 904

Impossibile visualizzare tutti i valori calcolati.

Posizione della superficie nella scena esterna:
 Punto contrassegnato:
 (0.100 m, -87.400 m, 0.000 m)



Reticolo: 512 x 512 Punti

E_m [lx]	E_{min} [lx]	E_{max} [lx]	E_{min} / E_m	E_{min} / E_{max}
14	0.04	167	0.003	0.000